



SPECIALTY FINISHES COLLECTION

High-Performance, Insulated Exterior Cladding Systems in a Variety of Finish Options, from Stucco, Limestone and Granite — to Metal, Brick and Woodgrain



Energy-Efficiency.
All-Weather Performance.
And a World of Finish Options.



As the name suggests, Outsulation® systems place insulation on the outside of the building, and are the most effective solution for meeting today's energy code requirements for continuous insulation (CI).

But there's much more to Outsulation than CI alone. Outsulation systems deliver the latest in building science — resulting in operationally energy-efficient, cost-effective construction, low maintenance, low embodied energy structures.

All Outsulation systems include adhesive, continuous insulation (CI), fiberglass mesh embedded in base coat, and finish, which are installed sequentially by a trained professional contractor. Some Outsulation systems protect underlying walls with air- and water-resistive barriers under the CI to maximize energy efficiency. Outsulation systems can be customized in many configurations to perform in any climate and on any type of structure.

Dryvit is now part of Tremco Construction Products Group (CPG).

The Tremco CPG Difference

Speed construction or restoration. Simplify installation. Extend the construction season. A Tremco Construction Product Group (CPG) single-source building envelope means more for everyone — more satisfied contractors, more comfortable occupants or tenants, and more efficient structures and cost-effective operation for owners.



Faster Construction Time

Lightweight, fast-curing and prefabricated products mean less occupant disruption, faster return to service, less revenue lost — and no call-backs.



Stronger and More Resilient

Our systems are designed for maximum durability, many with service lives far surpassing that of competing systems.



Cost Effective for the Long Term

A broad range of products can fit any project budget — but our energy efficiency and maintenance solutions can also help you ensure cost-effective ownership and operation for the long term.



One Point of Contact

Our products and systems are backed by industry-leading warranties — all from a single point of contact. We can also help with everything from asset management to diagnostics to installer training.



Any Look You Want

A wide range of colors and finishes like brick, granite, metals, stucco and more provide maximum flexibility in your roof and façade aesthetic.



Leak-Free Performance

Products provide maximum protection from air, moisture and thermal infiltration — and are performance tested in our one-of-a-kind Sustainable Building Solutions Test Facility.



Better Insulated

Industry-leading brands provide solutions for more efficient building construction and operation, and exceed strict energy codes for insulation.



Leading Edge Sustainability

Our building solutions help you meet green building standards like Net Zero, Living Building Challenge, Passive House and more.

WOODGRAIN FINISHES

The Look & Feel of Wood, the Performance of Dryvit

With Dryvit's woodgrain finish techniques, you can incorporate all the rich tones and textures of real woodgrain into your building's aesthetic — and also get the superior weatherability, durability and energy efficiency of a Dryvit Outsulation system.

Choose from our standard woodgrain color offerings shown below to ensure the perfect look and feel to complete your building's aesthetic.

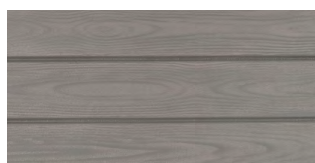
Dryvit woodgrain techniques can use varying degrees of pressure during application to produce the exact amount of "knotting," texture and grain depth desired.



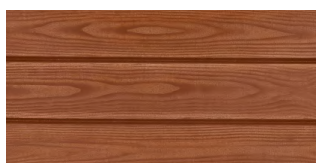
Features & Benefits

- Highly cost-effective vs. expensive real wood paneling
- Pairs with Outsulation systems
- Can be field-applied or prefabricated into panels
- 8 standard colors for shorter lead times
- Durable: will never rot, and very resistant to color fade
- Can vary "knotting," texture and grain depth as desired
- Created using readily-available graining tools
- Complete, monolithic wall from a single source

Standard Colors



ASH (870)



RED PINE (871)



DARK WALNUT (873)



SABLE (874)



BARK (875)



ESPRESSO (876)



SADDLE (877)



CEDAR (878)

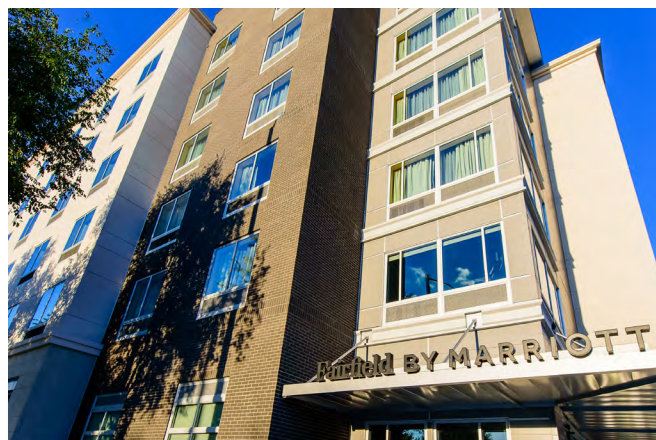


The Next Step in the Evolution of Brick

A lightweight insulated brick that matches the size, appearance and texture of clay, NewBrick® is a higher-performing alternative to traditional clay brick veneers.

More durable than traditional brick, NewBrick offers a superior cladding solution that reduces overall wall cost and accelerates the dry-in process.

In addition to 16 standard colors, NewBrick is available in 4 popular brick sizes, four color blends, four textures and with three lifelike effects. Custom colors and blends are available to bring your vision to life.



Features & Benefits

- Light weight reduces structural demands for façade
- Standard: 16 colors, 4 blends, 4 textures, and 3 effects
- Mosaic shapes install 12 bricks at once — *12X faster!*
- Up to 25% savings in true total installed wall cost
- Reduces freight, labor, and tools/equipment required

Standard Colors



CANNON DAWN



CASTLE WALL



CITADEL



COUNTRY COTTAGE



EARTHEN VESSEL



GATEHOUSE



HARBOR SIDE



HERITAGE HOUSE



HOMELAND



PATRIOT RED



PROVINCIAL PARK



RIVERBANK



RUSTIC VILLA



SCHOOL YARD



TOWN SQUARE



VALLEY FIELD



A Classic Brick Aesthetic, at a Fraction of the Time and Cost

Custom Brick™ is an exciting alternative from Dryvit, the nation's leading manufacturer of exterior insulation and finish systems. This dramatic finish provides a beautiful effect that will leave even the most experienced mason shaking his head in disbelief. The look of Custom Brick is simply amazing, and it has numerous advantages over other exterior cladding options.

Custom Brick is a textured finish applied using a template to create a stunning finish. It is available in a wide variety of patterns, colors, textures and shading techniques that can be used to make your building look exactly the way you want it to. No more settling for the design limitations of other exteriors.

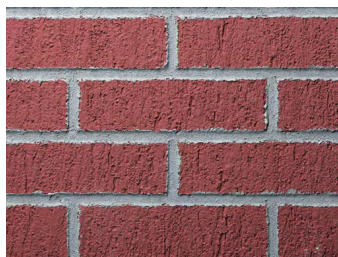
Features & Benefits

- Inexpensively emulates labor-intensive masonry
- Reduces structural demands for exterior facade
- 14 standard templates available
- Vapor-permeable: will not trap moisture vapor
- 100% acrylic: flexible, crack-resistant and long lasting
- Resistant to dirt and the growth of mold and mildew
- Perfect for interior or exterior applications

Standard Template Examples



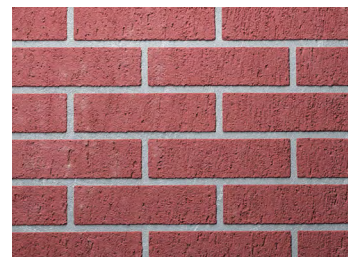
USED WALL BRICK



NY WALL BRICK 3/8"



UTILITY BRICK



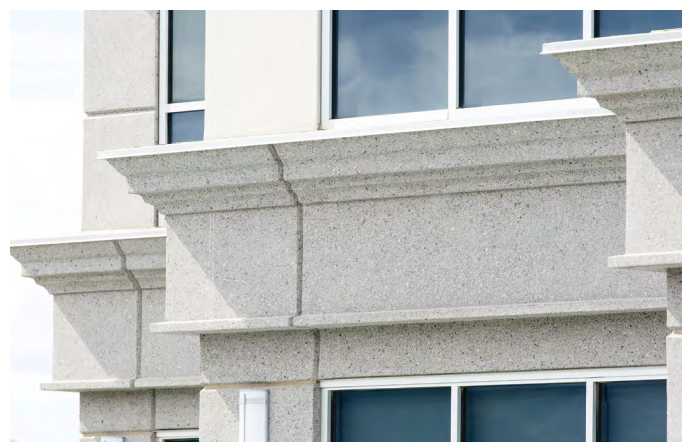
REGULAR FACE BRICK

A Look that's Always Taken for Granite

"Solid"... "Stately"... "Monumental"... all reactions to buildings made of granite. But granite is incredibly heavy and energy-intensive to find, produce, and transport.

To accommodate its' weight, a building also requires more concrete and steel structural support – adding to the cost and environmental footprint of a project.

Incorporating a blend of quartz, minerals and mica, Dryvit's TerraNeo finish is an environmentally-sustainable, 21st-century alternative — allowing you to create the appearance of granite at a fraction of the cost, project duration and environmental impact associated with the real thing.



Features & Benefits

- Natural aggregates provide excellent color retention
- Light weight reduces structural demands for façade
- 10 standard colors for shorter lead times
- Vapor-permeable: will not trap moisture vapor
- Inexpensively emulates look of labor-intensive granite
- DPR & PMR chemistries resist dirt, mold and mildew
- 100% acrylic for crack-resistance and longer life
- Exterior or interior application

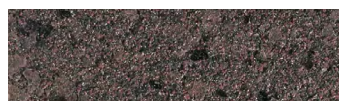
Standard Colors



EVEREST



GLACIER



ANDES



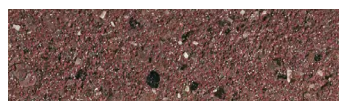
AMAZON



SERENGETI



VESUVIUS



SONORA



TETON



ZANZIBAR



GIBRALTAR

TIBUR STONE™

100% Acrylic-Based Finish with a Travertine Stone Look

Tibur Stone is a premixed 100% acrylic-based architectural finish which is offered in 12 standard colors. It is designed to provide an extremely smooth surface with the look of travertine stone. Tibur Stone includes DPR (Dirt Pick-up Resistant) chemistry to stay cleaner, longer.

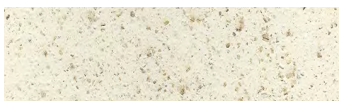
Tibur Stone finish is designed to be applied over substrates including Dryvit Outsulation systems, reinforced base coat, TAFS, and properly prepared masonry, stucco, precast or cast-in-place concrete as well as other approved substrates. Tibur Stone is trowel-applied by experienced plastering mechanics, and can be used for exterior applications as well as over properly prepared interior substrates.



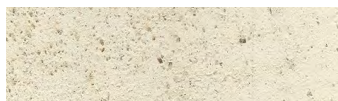
Features & Benefits

- Extremely smooth appearance of travertine stone
- Light weight reduces structural demands for façade
- 12 standard colors for shorter lead times
- Vapor-premeable: will not trap moisture vapor
- Trowel-applied for exterior or interior application
- DPR (Dirt Pick-up Resistant) chemistry stays cleaner
- 100% acrylic for crack-resistance and longer life

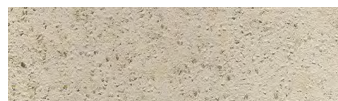
Standard Colors



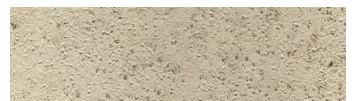
850ST ORVIETO



851ST MAHALO



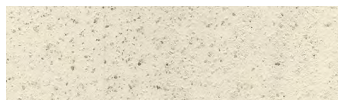
852ST TRISTAN



853ST SIDEWALK



854ST SILK ROAD



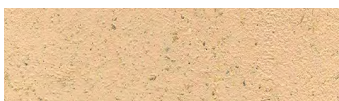
855ST WAIKIKI SAND



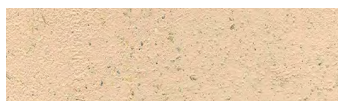
856ST CANARY ISLAND



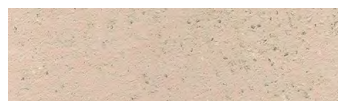
857ST LANAI



858ST FIJI



859ST OAHU



860ST CAYMAN



861ST SAN ANDREAS

STONE MIST®

Interior and Exterior Quartz Aggregate Finish

Stone Mist is a natural finish that accents the environment in subtle tones and enhances any exterior or interior wall. Special aggregates pick up the natural sunlight reflecting the glitter and beauty of only the rarest of stones. Colored quartz aggregate finish is set in a 100% acrylic binder. Stone Mist is offered in ten custom designed colors.

Stone Mist is a durable finish for all Dryvit systems. It may also be applied over properly prepared substrates such as masonry, stucco, precast or cast-in-place concrete and other approved substrates. Stone Mist is also ideal for interior applications.



Features & Benefits

- Natural aggregates provide excellent color retention
- Light weight reduces structural demands for façade
- 10 standard colors for shorter lead times
- Vapor-premeable: will not trap moisture vapor
- 100% acrylic for crack-resistance and longer life
- DPR & PMR chemistries resist dirt, mold and mildew
- Adheres to stone, masonry, stucco, wood and more
- Exterior or interior application

Standard Colors



101 CASTLE GRAY



102 WEDGEWOOD GRAY



103 MOON GLOW



104 DESERT



105 CINNAMON TOAST



106 WINTER MOON



107 STONE MOUNTAIN



108 MORNING FOG



109 GOLDEN SUNRISE



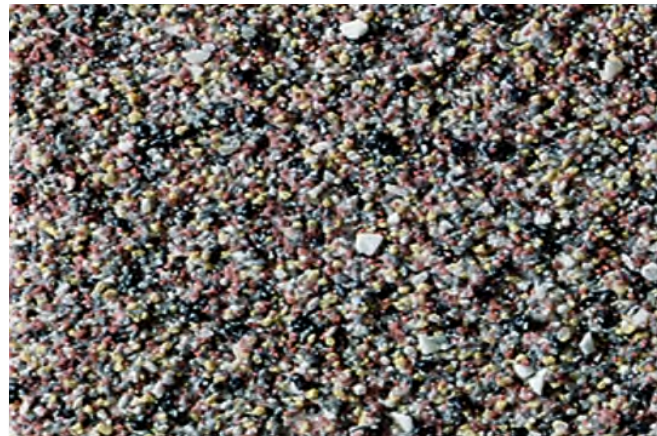
110 CANYON VALLEY

AMERISTONE™

100% Acrylic-Based Finish with Multi-Colored Quartz

Ameristone...rock solid and beautiful, provides the architect and designer with a new level of durability and performance in an elegant architectural stone finish. Ameristone is a dramatic blend of natural aggregates varying in size and color, encased in a clear, 100% acrylic binder.

Ameristone is recommended for use with any of Dryvit's exterior insulation and finish systems. It can also be used as a finish over properly prepared stucco, concrete and masonry substrates. Ameristone is an exterior and interior finish that is suitable for all building types.



Features & Benefits

- Natural aggregates provide excellent color retention
- Light weight reduces structural demands for façade
- 10 standard colors for shorter lead times
- Vapor-premeable: will not trap moisture vapor
- Adheres to stone, masonry, stucco, wood, primed metal
- DPR & PMR chemistries resist dirt, mold and mildew
- 100% acrylic for crack-resistance and longer life
- Exterior or interior application

Standard Colors



011 PEARL HAZE



012 STONY CREEK



013 WOODBURY PINK



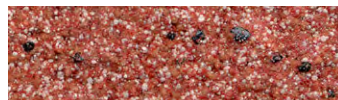
014 WHITE ASH



015 RIVER ROCK



016 CHAMPAGNE GRAY



017 SEDONA RED



018 EMERALD ISLE



019 VICTORIAN ROSE



020 MIDNIGHT STORM

Reflectit

Make Your Next Project Shine with the Look of Metal

A shiny, reflective look can add sophistication to any facade. Metal is a great complement to other finishes, and until now there have been limited and expensive options for achieving this appearance. Dryvit's Reflectit coating, used as the finish for any Outsulation system, results in a lightweight, cost-effective, energy-efficient, engineered cladding.

An array of textures, including smooth, is available and color options are nearly limitless.

An exterior finished with Reflectit is a light-weight, cost-effective, energy-efficient system that will meet budget without sacrificing the desired aesthetic.



Features & Benefits

- Realistic metal panel appearance at significant savings
- Light weight reduces structural demands for facade
- 12 standard colors for shorter lead times
- Vapor-premeable: will not trap moisture vapor
- Ideal for panelization delivery and application
- DPR & PMR chemistries resist dirt, mold and mildew
- Beautiful accent to compliment other Dryvit finishes
- Highly durable, pearlescent finish

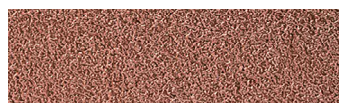
Standard Colors



250 TEAL MAGNOLIA



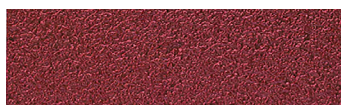
251 STARRY NIGHT



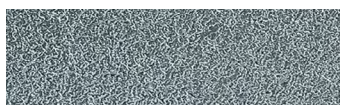
252 HAMMERED COPPER



253 CLEOPATRA



254 SIERRA ROSE



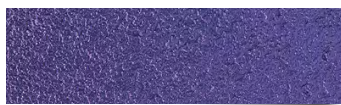
255 TIN MAN



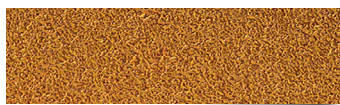
256 MEDITERRANEAN



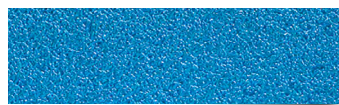
257 CHAMPAGNE



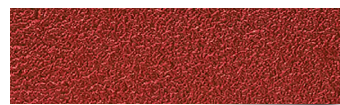
258 BARNEY



259 MAIZE



260 CARIBBEAN



261 CHILI PEPPER

FERROS®

The Modern, Distinct Look of Rusting Metal with Oxidation

In addition to its unique appearance, Ferros has hydrophobic qualities to repel liquids and contaminants, keeping the finish looking its best. Ferros forms a breathable film having excellent resistance to abrasion and long term weathering. Available in 4 variations of color and two effects, Ferros is a modern and elegant water-based specialty finish under the Dryvit brand.

Ferros may be applied over most common interior building materials including properly prepared and primed gypsum wallboard, cement board, plaster, concrete and masonry. It can also be applied over properly prepared and primed exterior cement plaster, concrete, metal, masonry and EIFS base coat.



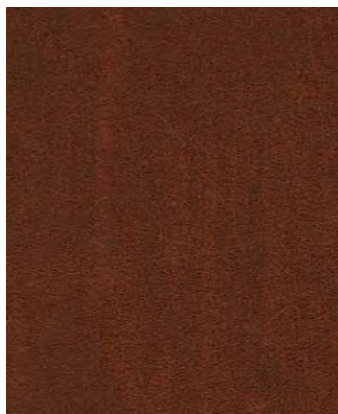
Features & Benefits

- Gives the effect of rusting metal with oxidation
- Light weight reduces structural demands for façade
- 4 standard colors, two textures: dripping & troweled
- Excellent resistance to abrasion
- Hydrophobic chemistry repels water and dirt
- Ideal for new construction and renovation
- Water-based specialty finish
- Excellent long-term weathering

Standard Colors



100RIF



101RIF



102RIF



105RIF

TUSCAN GLAZE™

The Old-World Feel of the Mediterranean

Tuscan Glaze is a tintable acrylic stain that can be applied to acrylic or elastomeric Dryvit finishes, providing an “old world” or “antique” look.

It is used as an antique stain to simulate century old plaster and was designed to obtain a faux or “mottled” appearance on Dryvit finishes. Tuscan Glaze works best when applied over fine aggregate finishes, such as Freestyle®, Limestone™ and Weatherlastic® Adobe, and is available in 12 standard colors.

Tuscan Glaze is a great choice for residential projects — but also commercial retail, hospitality and entertainment properties.



Features & Benefits

- Modern performance, with an old-world plaster look
- 100% acrylic chemistry is easy to use and apply
- Can be applied over a variety of textures
- 12 standard, readily-available colors
- Mottling can be varied for the precise look desired
- Perfect for residential and commercial applications
- Works best when applied over fine aggregate finishes

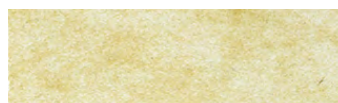
Standard Colors



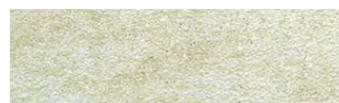
MORNING PETAL



METROPOLITAN



MAPLE WALNUT



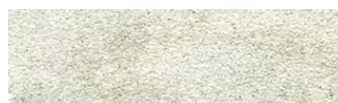
HEATHER



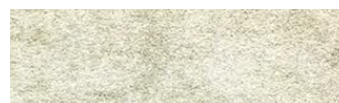
BERMUDA SAND



SAGE



PLATINUM GREY



NORTHERN GREY



COOL MIST



BUTTERCUP



SALMON



BLUE HAZE

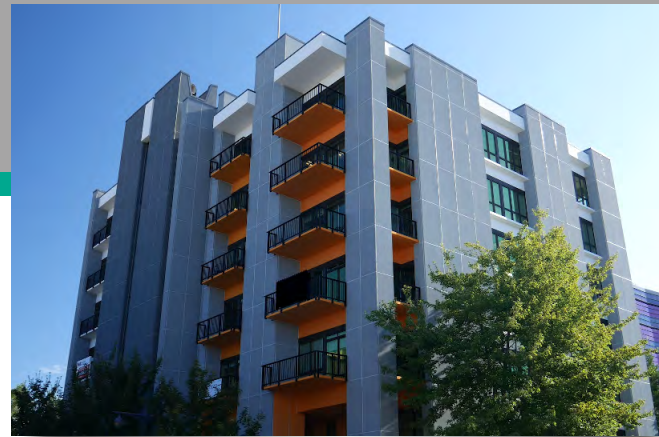


Renovation Solutions to Revive Aesthetics, Performance & More

Your building is a major financial asset – but a visually outdated and energy inefficient building impacts curb appeal, diminishes comfort for occupants, and reduces financial return.

That's where ReVyvit comes in. It's the exterior wall renovation solution that can revive your building by improving aesthetics, optimizing performance and substantially increasing your ROI – all without ever closing the doors!

Whether a simple recoat, or a complete tear off and reclad, Dryvit has the expertise and envelope solution for your building.



Features & Benefits

- Improve energy efficiency and thermal performance
- Lower heating and cooling costs
- Enhance curb appeal and overall building value
- Bring your structure into building code compliance
- Boost occupancy percentage and rental rates
- Increase occupant comfort
- Completely modernize your aesthetic

A World of Finishes, Colors and Textures



tremcocpg.com

